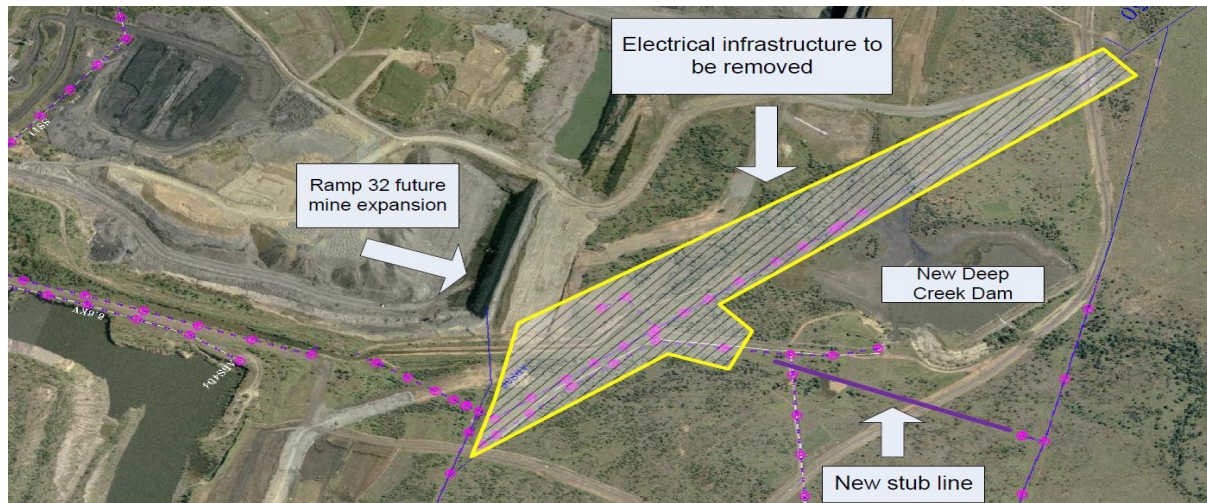




Project Summary

Blackwater Mine Ramp 32 Power Dragline Power Supply project



Project Brief

- 66/6.6kV power lines and Substation (SS) 38 to be relocated in order for mining operations to continue with the R32 pit.
- Scope includes the installation of a new stubline extended from ABS 55 and relocation / upgrade of Substation 38.
- Capital project - \$2,1 M
- Project Completion Dec 2012

Deliverables

- Retraction of 3km of redundant 66/6.6kV Power lines
- Installation of a new 700 meter long 66kV Stubline with underground road crossing and transportable mining substation earth mat.
- Relocation of a fixed 66/6.6kV fixed substation including new concrete bund, earth mat and modifications to make the substation compliant to Australian standards.



Project Summary



Business Outcome

- Successfully completed project on time and under budget
- Zero incidents or impact to mine operations

Contact Us

1800 787 160

Email

mark.clarke@epcsolutions.com.au